



VinciSmile, from the USA with headquarters located in Los Angeles, California, is an enterprise specialized in the research and development of invisible orthodontic aligners, which are an effective alternative to traditional metal braces.

VinciSmile aligners have been awarded with 11 copyrights and more than 30 patents. VinciSmile aligners have passed the FDA (USA), MDL (CAN), ARTG (AUS), NMPA (CHN) and many product registration in the countries around the world and are in compliance with the custom-made device requirements under EU 93/42/EEC as well. VinciSmile aligners have obtained the ISO 13485 and MDSAP certificates to guarantee that they are designed and manufactured under the international quality management standards and regulations.

VinciSmile orthodontic system's patented software comes with extensive functions to ensure ease of use and accuracy of the treatment proposal. Both doctors and patients can see the whole treatment process and final outcome even before starting the treatment plan. VinciSmile's orthodontist-led team designs and verifies every 3D treatment plan to ensure accuracy.

VinciSmile has successfully entered global markets like Australia, Singapore, Thailand, India, Germany, Vietnam, etc., we believe everyone deserves the best smile.

SUPERIOR CHOICE
FOR DIGITAL DENTAL
SOLUTION



VINCISMILE GROUP LLC

Add: 18150 Rowland Street, City of Industry, CA 91748, USA

Email: info@vincismile.com

www.vincismile.com



Follow @VinciSmile

VINCISMILE INTRAORAL DIGITAL IMPRESSION INSTRUMENT



REALISTIC COLOR SCANNING

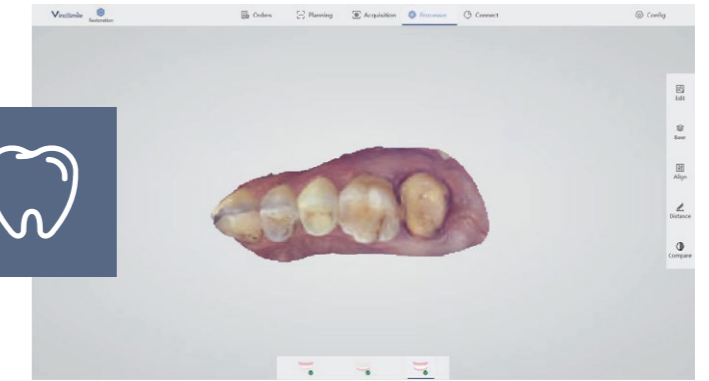
to help show a more detailed 3D image of the teeth

MULTIPLE SCANNING HEADS, INFINITE OPTIONS

Multi functionality, safe and reliable, universal data format

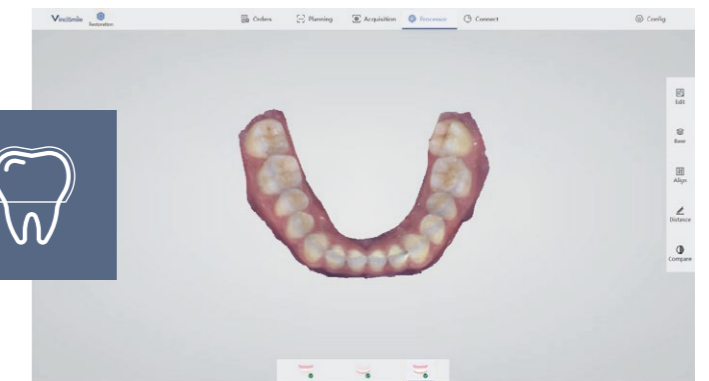
RESTORATION

Accurate and clear shoulder edge guarantees more efficient design.
True color scanning can effectively distinct the gums and tooth structure.
Fast scanning results permit immediate restoration.



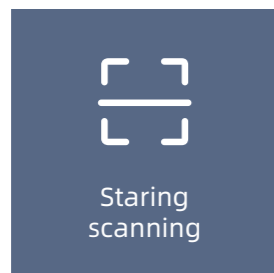
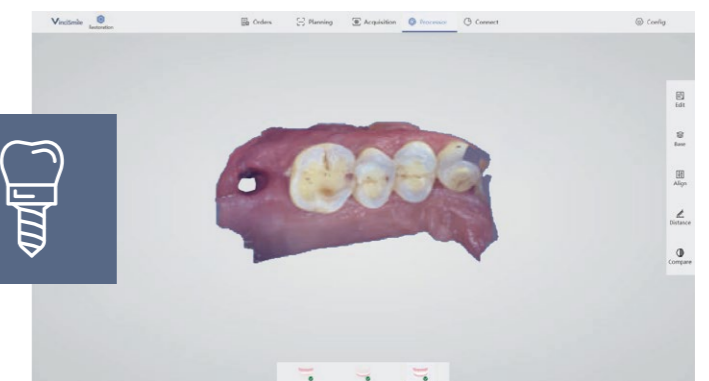
ORTHODONTICS

The full dentition scan has high accuracy and restores the true shape of the dental arch.
Immediate treatment plan, low time-cost.

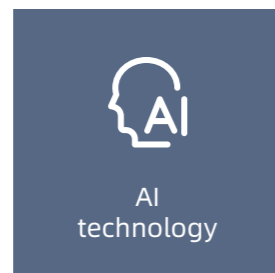


IMPLANT

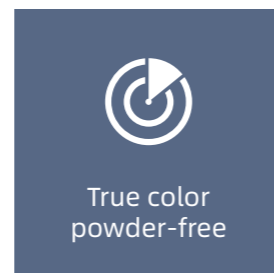
Fast scanning speed, accurate scanning metal positioning rod.
Great scanning depth, available 3mm data under cuff.
Improved experience, no repeated scanning.



Staring scanning



AI technology



True color powder-free

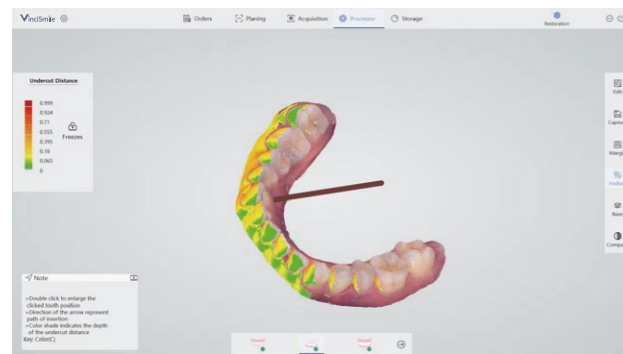
A powder-free intraoral scanning device can display the teeth details in a high-definition natural view based on video dynamic intraoral scanning.

Staring 3D light structure scanning technology, high-speed and anti-shaking performance

AI technology makes you enjoy the smart experience and smooth scanning.

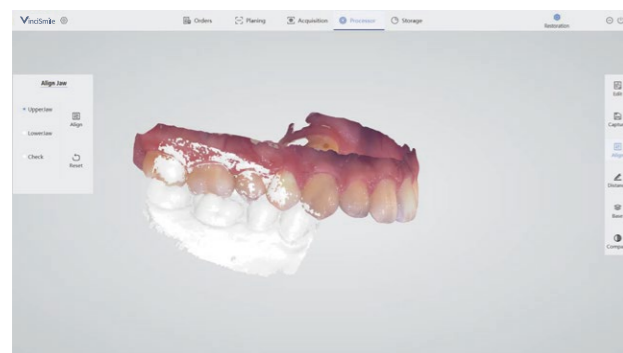
Intelligent tracking technology ensures fast recovery scanning of any oral position.

SOFTWARE HIGHLIGHTS



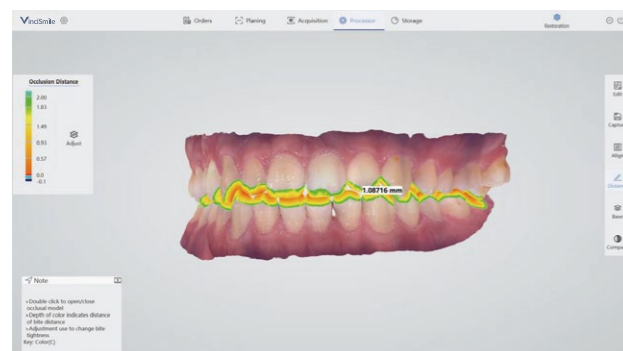
UNDERCUT AREA ANALYSIS

It allows to check the undercut at different perspectives.
The undercut area will be marked with gradient color.



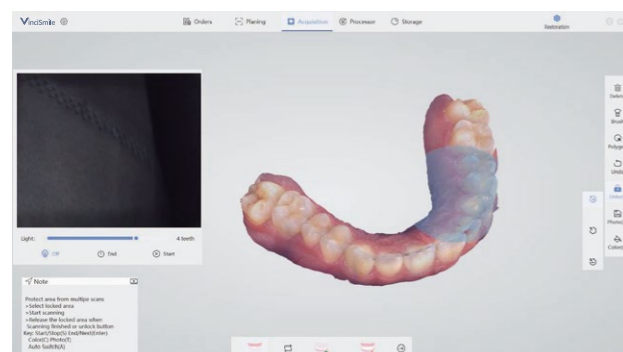
ALIGN

Recalculate the current occlusion relationship.



DISTANCE

It allows to calculate the occlusal distance and show the result, and to separate the upper and lower jaw to check the distance.



LOCK AREA

It is used to protect the area that you do not want to change during the scanning process.

TRANSMISSION IN ONE-CLICK

Coming Soon

Transmit your scanning data within the software, it's high-efficient and time-saving. The real-time data process technology strengthens treatment performance.



Transmit your cases to
VinciSmile with just One-Click

www.vincismile.com



ANALYTICS



REAL-TIME



USER-FRIENDLY
HMI



ACCURATE, PRECISION AND FAST

Bring an unprecedented oral treatment experience

VINCISMILE SCANNER

• SHORT TREATMENT PERIOD

Data can be obtained directly from the mouth, 3 minutes to take the model, and 1 hour to complete the denture restoration.

• HIGH DATA ACCURACY

High accurate scanning data, and it is convenient for data storage and trace.

• COMFORTABLE

Short mouth opening time, no abnormal sensation in the mouth, and available to be paused at any time.

• INFORMATIVE

The visual digital model can help analyze and simulate intraoral changes in time, such as tooth wear, gingival recession, etc.

TRADITIONAL IMPRESSION

• LONG TREATMENT CYCLE

It takes 5-10 minutes for impression and usually takes 1-2 weeks to complete the dental restoration. The rework rate is high.

• LOW DATA ACCURACY

Indirectly data access through multiple processes, e.g. impression, reversal, and scanning, which reduces the accuracy of data.

• UNCOMFORTABLE

Long patient's mouth opening time impacts impression taking experience, and the abnormal sensation will lead to nausea and vomiting.

• LESS INFORMATION

It is impossible to observe the dynamic changes based on the single static model data.

VinciSmile Scanner	Parameters
Scanning technology	Video scanning
Size (L*W*H)	216mmx40mmx36mm
Weight	246g
Tip	Multiple specifications, repeated usage
Specification (L*W*H)	83.4x19.6x14.6mm
Window Size	17x15mm
Scanning Depth	15mm
Data Format	STL, PLY, PTY
Interface	USB 3.0
Full Dentition Scanning Speed	< 5 min



-  AI technology improves intelligent scanning experience.
-  Clear cervical margin, vivid color and high precision.
-  A variety of scanning tips to meet various complex cases.
-  Fast scanning speed, easy to use.
-  Portable and micro device, easy to operate.
-  Powder free for true color scanning.

MICRO DEVICE, COMPREHENSIVE VISION, COMFORTABLE EXPERIENCE

Portable pen-type design

246g small and exquisite tip

14mm ultra-low entrance height

17mm excellent scanning depth

